

SDSU MASTERS of HOMELAND SECURITY

GEOL600 SENSOR NETWORKS



NET TOOLS



Taking Command
Windows key shortcuts
Establishing connectivity
Do you have an IP? -ipconfig-
Ping default gateway
Ping external IP
DNS Server Configuration
Browse external website
Traceroute
PingPlotter
Netstumbler
Sygate Personal Firewall
Services / Ports
Active Ports
Launcher
Setting PATH (win)

Advanced IP Scanner
AntiVir
Adaware
Cygwin
Drop to Dos
Unix utils : wget
HTTrack Website Copier
Netsnippets
Netfile Http/Ftp Server
Remote control VNC
Remote control Radmin
Snagit
SmartFTP
Rename
BugmeNot.com
Anonymizer.com

TAKING COMMAND

A command prompt is a nongraphical interface that allows you to interact with your operating system. Enter commands by typing their names followed by options and arguments. These commands then invoke programs.

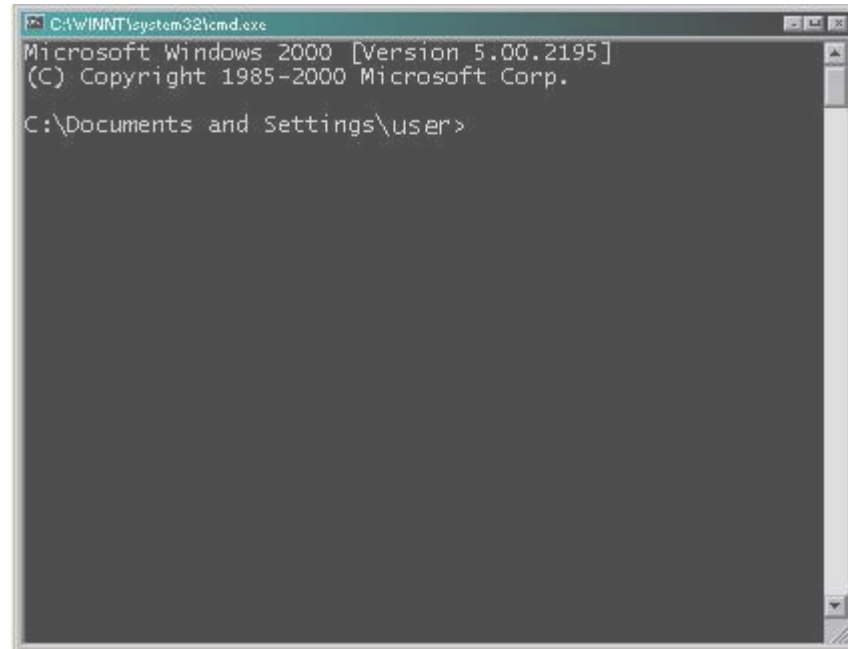
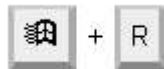
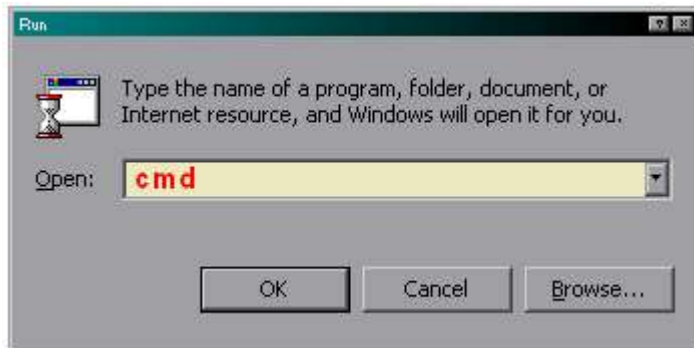
Mac OSX (FreeBSD)

To access the Unix command prompt, open the Terminal application. It is located by default in Applications : Utilities folder.

Windows

Start menu > Run...

In the 'Open:' field, enter **cmd** (NT/2K/XP) or 'command' (9x / Me).



WINDOWS KEY SHORTCUTS



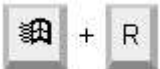
The Windows Key is usually located between the Ctrl and Alt keys. If it is not there, it may be elsewhere on the keyboard or you don't have one.



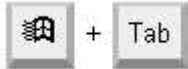
Displays the Start Menu.



Opens a new Explorer Window.



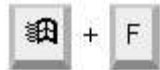
Displays the Run command.



Cycle through buttons on Task Bar.



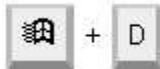
Toggle between open windows.



Displays the Find files dialog.



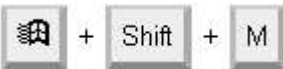
Displays the Systems Properties dialog.



Minimizes all windows and shows the Desktop.



Minimizes all open windows.

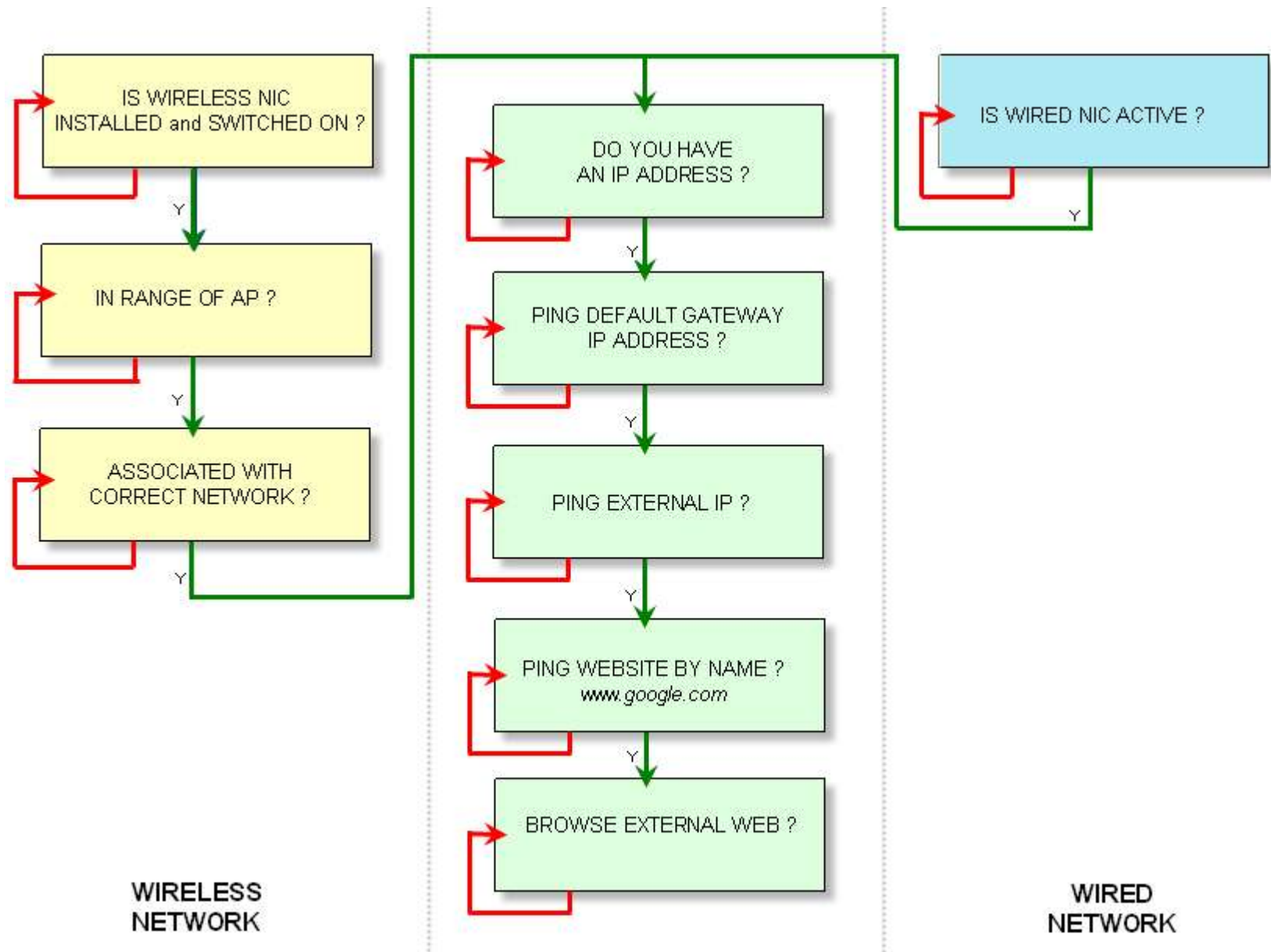


Restores minimized windows.



Lock computer (XP).

ESTABLISHING CONNECTIVITY



Is NIC plugged in and switched on ? (LAN & WLAN)

Many laptops have the ability to disable the wireless card, either through software or a physical On/Off switch.

Verify that pcmcia card is inserted properly, is turned on and that all required drivers are installed.

With a wired connection, some laptops disable the interface if it is not used on boot-up and the laptop is running on battery power.

Check cable integrity and make sure connection between RJ45 connector and NIC is sound and that cable being pulled out of socket through cable strain.

Look for indicator LEDs and be familiar with all quirks of your hardware.

Are you within range of AP ? (WLAN)

Check signal meter, and if possible , check signal to noise ratio. If you are out of range or receiving interference from neighbor's microwave oven or cordless phone, connection may be affected.

Are you associated with correct network ? (WLAN)

Especially prevalent in shared environments, if open wireless networks are present and you have configured your NIC to associated with 'any' or 'default' networks, you may find yourself on your neighbor's network.

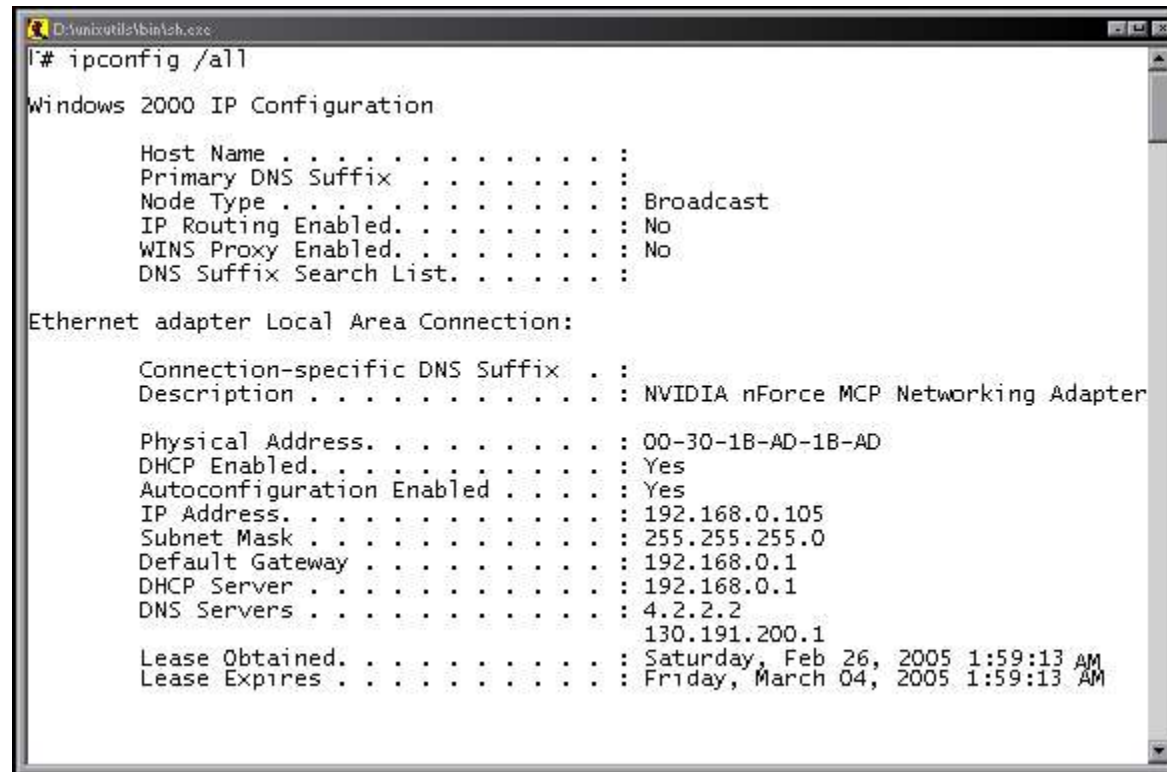


DO YOU HAVE AN IP ADDRESS ?

Unix command line: *ifconfig -a*

Windows NT,2K,XP: bring up a command shell and enter: ***ipconfig /all***

Windows 9x,ME: run *winipcfg*



```
D:\unixutils\bin\ah.exe
l# ipconfig /all

Windows 2000 IP Configuration

    Host Name . . . . . : 
    Primary DNS Suffix . . . . . : 
    Node Type . . . . . : Broadcast
    IP Routing Enabled. . . . . : No
    WINS Proxy Enabled. . . . . : No
    DNS Suffix Search List. . . . . : 

Ethernet adapter Local Area Connection:

    Connection-specific DNS Suffix . . : 
    Description . . . . . : NVIDIA nForce MCP Networking Adapter

    Physical Address. . . . . : 00-30-1B-AD-1B-AD
    DHCP Enabled. . . . . : Yes
    Autoconfiguration Enabled . . . . : Yes
    IP Address. . . . . : 192.168.0.105
    Subnet Mask . . . . . : 255.255.255.0
    Default Gateway . . . . . : 192.168.0.1
    DHCP Server . . . . . : 192.168.0.1
    DNS Servers . . . . . : 4.2.2.2
                            130.191.200.1
    Lease Obtained. . . . . : Saturday, Feb 26, 2005 1:59:13 AM
    Lease Expires . . . . . : Friday, March 04, 2005 1:59:13 AM
```

If IP = 0.0.0.0 or 169.x.x.x then you do not have a valid IP address

Solutions:

- (1) Manually configure IP as per network admin directions, check DHCP server is working, check MAC address filtering rules include your NIC
- (2) Find network administrator
- (3) Camp and sniff, hijack IP (not recommended)

PING DEFAULT GATEWAY

```
PING vapor.arl.army.mil (128.63.240.80): 56 data bytes
64 bytes from 128.63.240.80: icmp_seq=0 time=16 ms
64 bytes from 128.63.240.80: icmp_seq=1 time=9 ms
64 bytes from 128.63.240.80: icmp_seq=2 time=9 ms
^C
----vapor.arl.army.mil PING Statistics----
3 packets transmitted, 3 packets received, 0% packet loss
round-trip (ms)  min/avg/max  = 8/10/16
```



Author of Ping: Mike Muuss (<http://ftp.arl.mil/~mike/ping.html>)

The first hop on the way out to the Internet is the **Default Gateway**, listed in output of `ipconfig /all` in previous step.

At the command line, ping the IP address of the default gateway

An unreachable gateway doesn't necessarily indicate a problem, as some routers may be configured to ignore ping requests.

However, if you cannot ping the gateway and cannot ping the external Internet, verify that the gateway device is operational. Hunt down network administrator.

```
#ping 192.168.0.1
```

```
Pinging 192.168.0.1 with 32 bytes of data:
Reply from 192.168.0.1: bytes=32 time=93ms TTL=64
Reply from 192.168.0.1: bytes=32 time<10ms TTL=64
```

```
Ping statistics for 192.168.0.1:
```

```
    Packets: Sent = 2, Received = 2, Lost = 0 (0% loss),
```


PING EXTERNAL IP

Memorize a popular web IP address and try to ping it, for instance:

vnc-bak.sys.gtei.net	4.2.2.2
www.google.akadns.net	66.102.7.147

A successful ping validates basic connectivity to the external Internet.

If you can ping the gateway, but cannot reach the external net, then traffic is not getting beyond the default gateway, or is not coming back.

Use traceroute to determine where connectivity is being lost.

PING EXTERNAL WEBSITE BY NAME

This is an important and separate step from the previous.

If you can ping 66.102.7.147 but attempts to ping www.google.com fail, then whilst your routing is working properly, it is likely that your DNS name resolution is not.

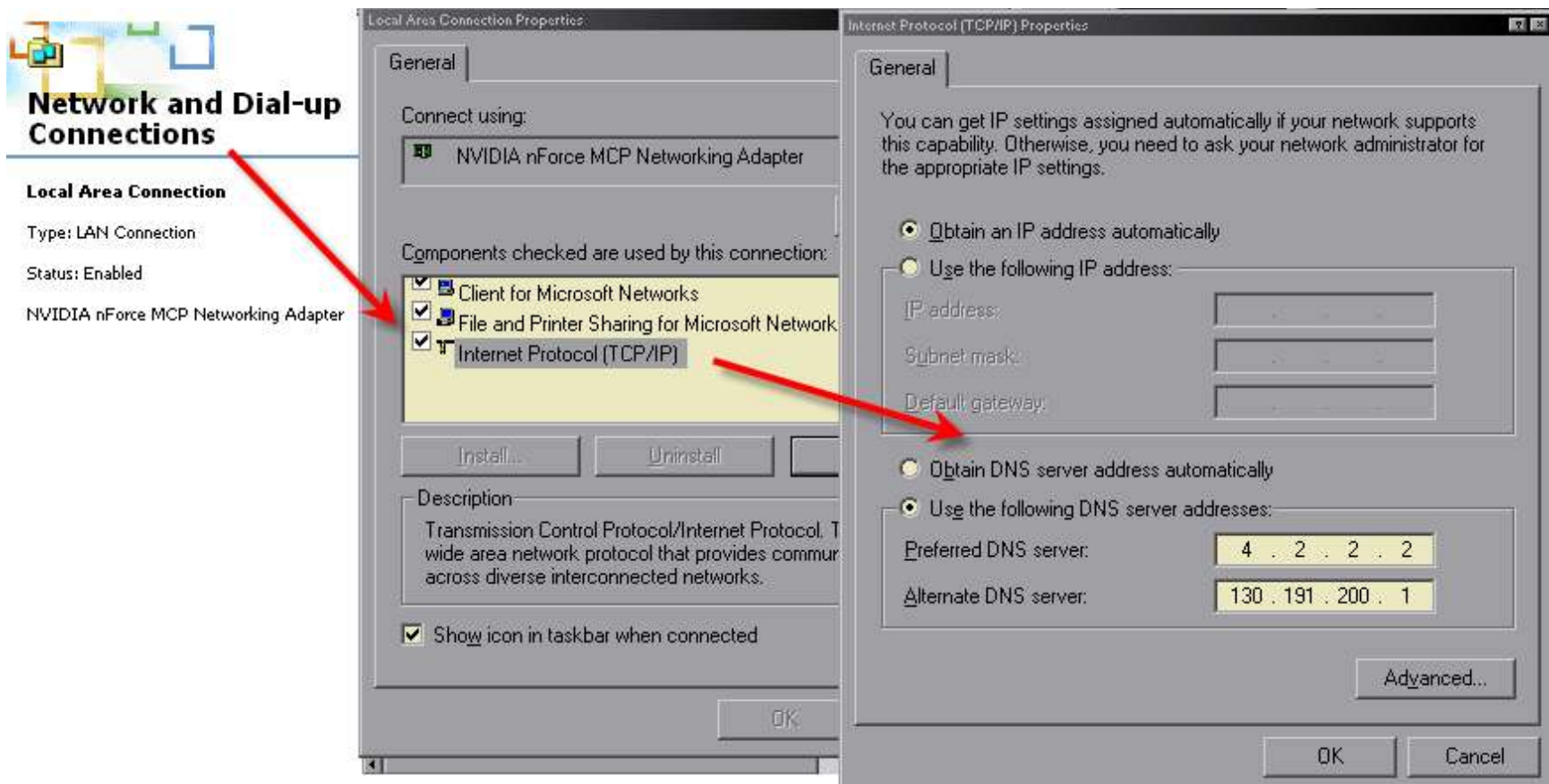
Check the DNS Servers handed to you by your DHCP server.

(ipconfig /all)

If you have no DNS servers listed, then your DHCP server did not hand them out . Either assign them manually or fix the DHCP servers.

If you have DNS servers listed but still cannot resolve DNS names, try assigning servers manually using known working addresses, and contact network admins.

Checking DNS server configuration (w2k)



BROWSE EXTERNAL WEB

Final check of connectivity.

Public access networks may run captive portals that require login via webpage before allowing full network access.

Also useful for identifying any problems with intervening proxy servers, which may require further configuration. Check with network administrator.

TRACEROUTE

Traceroute can help pinpoint where communications are failing, it is not infallible as some routers may block traceroute traffic to pass.

Traceroute attempts to contact every machine along the route between your local computer and the target destination, and reports on average time for each network hop.

From the command line (win) run: **tracert <target-address>**

```
# tracert www.google.com
```

```
Tracing route to www.google.akadns.net [66.102.7.147]over a maximum of 30 hops:
```

```
 1      *          *          *          Request timed out.
 2      *          *          *          Request timed out.
 3      *          *          *          Request timed out.
 4      *          *          *          Request timed out.
 5      *          *          *          Request timed out.
 6      *          *          *          Request timed out.
 7      *          *          *          Request timed out.
 8     15 ms      31 ms      32 ms      66.249.94.12
 9     15 ms      32 ms      15 ms      66.249.94.31
10     16 ms      31 ms      32 ms      216.239.49.154
11     15 ms      32 ms      31 ms      66.102.7.147
```

```
Trace complete.
```

Connectivity problems are indicated by the presence of stars (*) in the IP address field, or by long connection times/ time outs.

Successful traces show the IP addresses and the hop time to the destination.

Graphical clients are available which make this information more human friendly but the basic command line interface is sufficient for day to day use.

```
# traceroute 4.2.2.2
```

```
Tracing route to vns-c-bak.sys.gtei.net [4.2.2.2] over a maximum of 30 hops:
```

```
  1  109 ms    16 ms    15 ms   10.7.232.1
  2   79 ms    <10 ms   15 ms   vistaggc01-gex0915.sd.sd.cox.net [68.6.10.202]
  3  <10 ms    16 ms    15 ms   fed1sysc01-gex0912.sd.sd.cox.net [68.6.8.66]
  4  <10 ms    16 ms    16 ms   68.6.8.190
  5  <10 ms    15 ms    47 ms   fed1bbrc01-pos0203.rd.sd.cox.net [68.1.0.200]
  6   16 ms    15 ms    16 ms   so-0-1-0-0.gar1.SanDiego1.Level3.net [63.214.191.45]
  7  <10 ms    16 ms    15 ms   so-7-0-0.mpl1.SanDiego1.Level3.net [4.68.113.93]
  8   16 ms    15 ms    16 ms   so-8-0.hsa1.SanDiego1.Level3.net [4.68.112.130]
  9  <10 ms    16 ms    15 ms   vns-c-bak.sys.gtei.net [4.2.2.2]
```

```
Trace complete.
```

Hop	IP	Hostname	last [ms]	min [ms]	max [ms]	ava. [ms]	var. [ms]	total Loss	Latitude	Longitude
1	*	*						2		
2	*	*						2		
3	*	*						1		
4	68.6.8.194	68.6.8.194	0	0	0	0	0		33 52 11 N	84 20 23 W
5	68.1.0.204	68.1.0.204	0	0	0	0	0		33 52 11 N	84 20 23 W
6	63.214.191.45	63.214.191.45	0	0	0	0	0		39 58 47 N	105 09 00 W
7	4.68.113.93	4.68.113.93	0	0	0	0	0		42 22 48 N	71 07 47 W
8	64.159.1.126	64.159.1.126	15	15	15	15	15			
9	4.68.96.82	4.68.96.82	16	16	16	16	16		42 22 48 N	71 07 47 W
10	209.0.227.34	209.0.227.34	16	16	16	16	16		39 52 48 N	105 05 59 W
11	65.106.5.49	65.106.5.49	16	16	16	16	16		37 19 11 N	121 55 11 W
12	65.106.0.13	65.106.0.13	47	47	47	47	47		37 19 11 N	121 55 11 W
13	65.106.1.38	65.106.1.38	47	47	47	47	47		37 19 11 N	121 55 11 W
14	65.106.0.9	65.106.0.9	94	94	94	94	94		37 19 11 N	121 55 11 W
15	65.106.1.26	65.106.1.26	78	78	78	78	78		37 19 11 N	121 55 11 W
16	65.106.0.5	65.106.0.5	78	78	78	78	78		37 19 11 N	121 55 11 W
17	65.106.3.206	65.106.3.206	78	78	78	78	78		37 19 11 N	121 55 11 W
18	64.1.7.214	64.1.7.214	78	78	78	78	78		37 19 11 N	121 55 11 W
19	209.119.243.74	209.119.243.74	78	78	78	78	78		39 00 00 N	76 52 47 W
20	209.119.54.196	209.119.54.196	156	156	156	156	156		39 00 00 N	76 52 47 W

PINGPLOTTER

(freeware)



PingPlotter is a network troubleshooting and diagnostic tool. It uses a combination of traceroute, ping, and whois to collect data quickly, and then allows you to continue to collect data over time to give you the information you really need to identify problems (both short-term and long-term trends).

PingPlotter allows you to "See the network", and "Pinpoint problems" by taking traceroute, ping, and whois to a new level; graphically presenting data over time. It's fast, and the graphical aspects make it easy to quickly see where a problem is occurring. Alerts, statistics, and numerous other features give the extra power you need to find and troubleshoot problems.

High performance low overhead multi-threaded trace engine.

Graphical display shows route, hosts, latencies

Displays packet loss percentage

Shows min/max response times for range

Customizable column widths

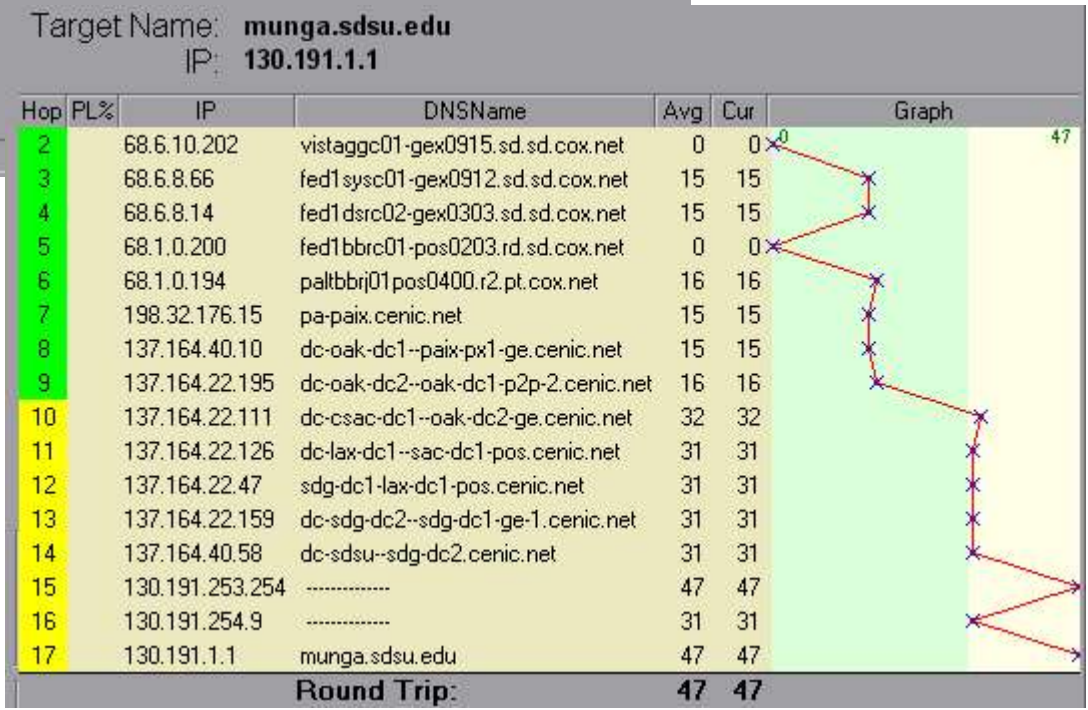
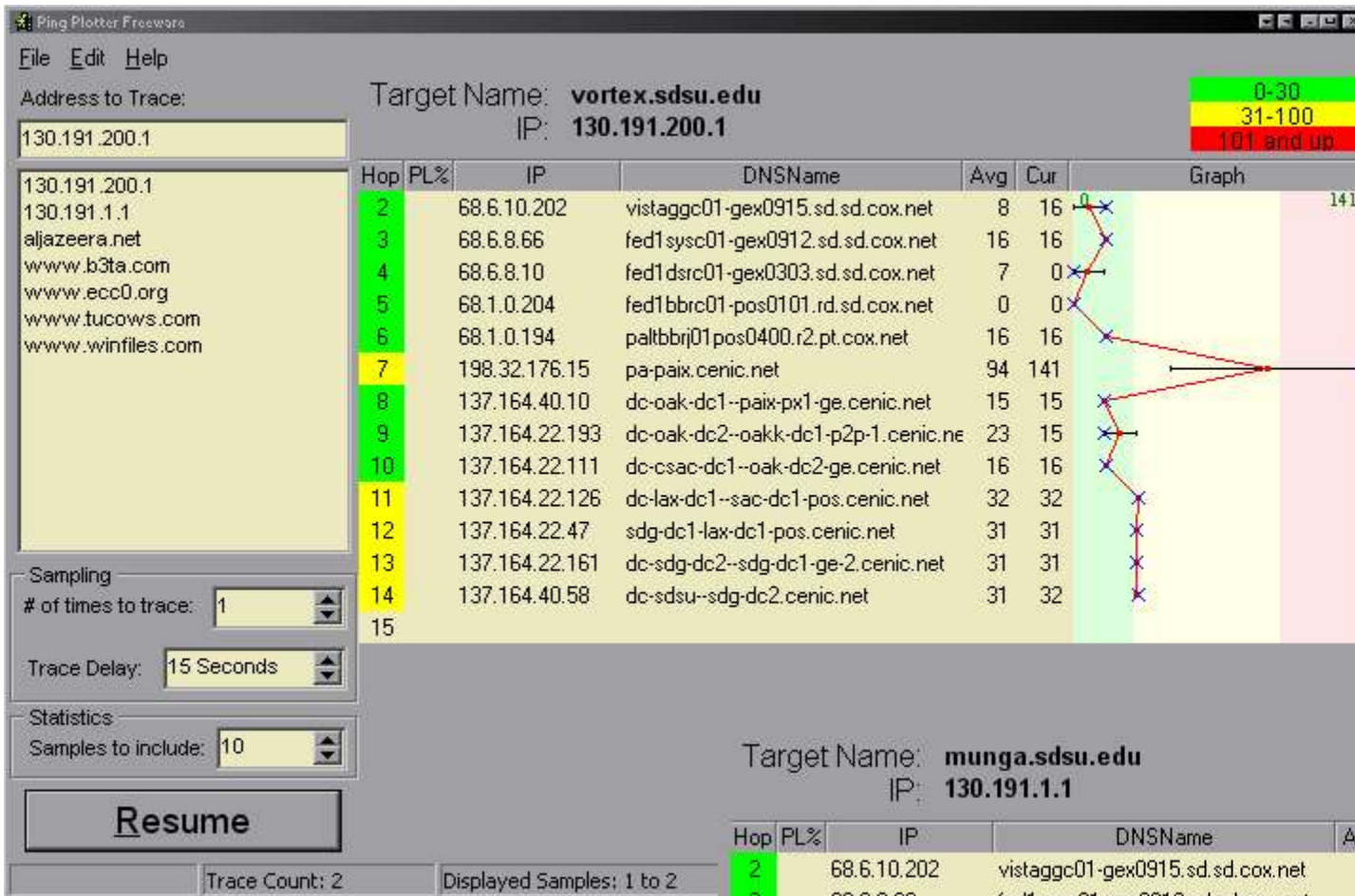
Can copy image to clipboard and paste into any 3rd party image software.

Tracks current route even if route changes during execution time

IP Address to name lookups happen in a separate thread means no waiting!

Can ignore first hop for unresponsive initial routers

www.pingplotter.com/downloads/pngplt_1.exe



PingPlotter
used to compare triptimes
to 2 SDSU DNS servers from
local San Diego location

NETSTUMBLER

(freeware)



NetStumbler is a tool for Windows that allows you to detect Wireless Local Area Networks (WLANs) using 802.11b, 802.11a and 802.11g.

It can be used to:

Verify that your network is set up the way you intended.

Find locations with poor coverage in your WLAN.

Detect other networks that may be causing interference on your network.

Detect unauthorized "rogue" access points in your workplace.

Help aim directional antennas for long-haul WLAN links.

WarDrive.

Map AP locations using a GPS

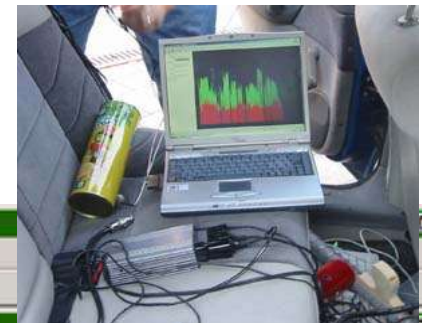
www.netstumbler.com/downloads



● = No WEP Security
● = WEP Encryption Enabled

caveat:

whilst v.0.40 supports a greater range of cards, not all cards are supported.



Network Stumbler - merge 2.ns1

merge 2.ns1:1

Channels	MAC	Ch...	WEP	Type	SSID	Name	Vendor	SNR	SNR+	Latitude	Lon...
1	00022D0F9D21	1		AP	AirWave	Happy Danuts	Agere (Lucent) Orinoco	20			
2	00601DF02B88	3		AP	AirWave	AirWaveOne	Agere (Lucent) WaveLAN	10			
3	00022D0FCECB	11		AP	AirWave	AP2 Printer's Inc Mountainview	Agere (Lucent) Orinoco	27			
4	00601DF05B5C	3, 5		AP	AirWave	AP1 Printer's Inc Mountainview	Agere (Lucent) WaveLAN	46			
5	0040964429BA	6	Yes	AP	Alan2		Cisco (Aironet)	10		N37.413520	W1
6	00601D1E1AFE	11		AP	Alpha		Agere (Lucent) WaveLAN	9		N37.332253	W1
7	00409630E8D8	1		AP	alpha		Cisco (Aironet)	32		N37.412748	W1
8	004096492BE5	6	Yes	AP	amdwlان		Cisco (Aironet)	8			
9	00601D22C094	3		AP	Angela's Airport Arena	Angela's Animal Town	Agere (Lucent) WaveLAN	31		N37.442843	W1
	00022D0D855C			AP	Angela's Airport Arena	Hitoshi's Hangover Haven	Agere (Lucent) WaveLAN	48		N37.443073	W1
	00022D27A07			AP	any		Gemtek (D-Link)	13		N37.410712	W1
	0040962A702		Yes	AP	ANY		Delta Networks	11		N37.333678	W1
	00409632A06		Yes	AP	Apartment		Agere (Lucent) Orinoco	2			
	00409635B3F7			AP	Apple Network 08A6a9	Mignot Base Station	Agere (Lucent) Orinoco	13			
	00409635D2B			AP	Apple Network 1f5db7		Agere (Lucent) Orinoco	5			
	00022b1f6538			AP	Apple Network 1f6538		Agere (Lucent) Orinoco	-1			

merge 2.ns1:2

Not scanning

GPS timed out

SYGATE PERSONAL FIREWALL

(free for personal use)

SPF delivers unobtrusive, highly configurable, enforceable rule-based security policy by constantly operating in the background of your PC. Policies regarding applications, trusted IP addresses, ports, protocols and scheduling can be customized to support and secure any network configurations or requirements.

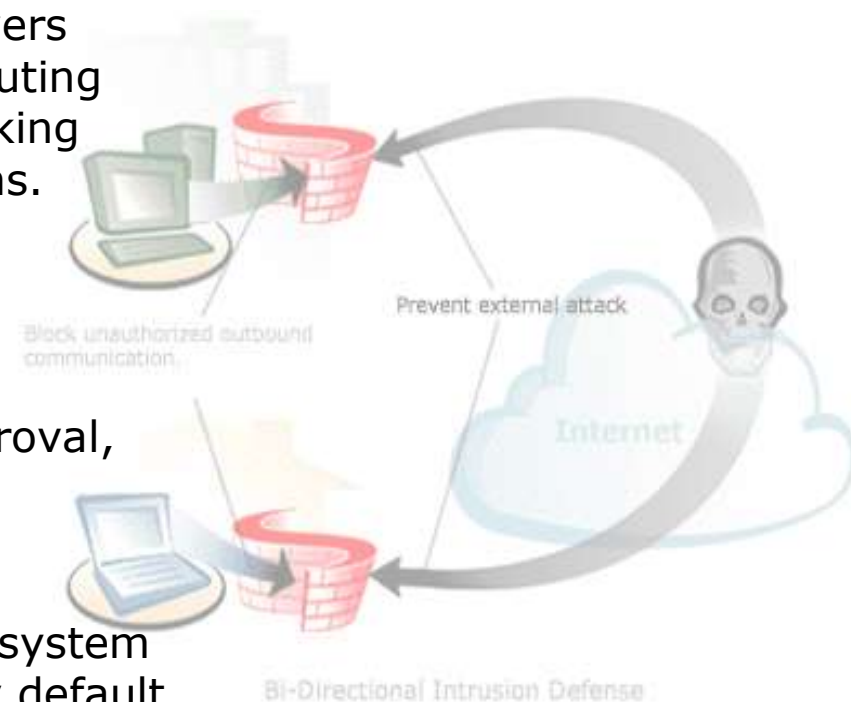
Designed with high performance in mind, it delivers top-notch security without sacrificing your computing power, it protects your computer by actively looking for hostile intruders and Trojan horse applications.

If an intrusion attempt occurs, SPF detects it in real-time and blocks it by default.

You are immediately notified and, with your approval, your Internet connection is adjusted to prohibit further attacks.

Likewise, if an unauthorized application on your system attempts to access the Internet, SPF blocks it by default, advises you of the situation and waits for your approval before proceeding further.

Sygate Personal Firewall is deemed 'easy to use'.



The screenshot displays the Sygate Personal Firewall interface. At the top, there is a menu bar with 'File', 'Security', 'Tools', 'View', and 'Help'. Below the menu bar are icons for 'Block All', 'Applications', 'Logs', 'Security Test', and 'Help'. The main area contains four graphs: 'Incoming Traffic History' (showing blocked and total traffic), 'Outgoing Traffic History' (showing blocked and total traffic), and 'Attack History Graph'. Below the graphs is a 'Running Applications' section with a table listing active processes and their network connections. At the bottom, there is a 'Security Status' indicator set to 'Normal' and a 'Show Message Console' button.

Running Applications:

Application	Prot...	Status	Local Port	Remote Port	IP Address	Process	Application Path
AVGUARD.EXE	TCP	LISTEN	18350	0	0.0.0.0->0.0.0.0	468	D:\Program Files\AVPersonal\AVGUARD...
AVGUARD.EXE	TCP	CONN...	18350	1029	0.0.0.0->127.0.0.1	468	D:\Program Files\AVPersonal\AVGUARD...
AVGUARD.EXE	TCP	CONN...	18350	1104	0.0.0.0->127.0.0.1	468	D:\Program Files\AVPersonal\AVGUARD...
explorer.exe	UDP	CONN...	1098	1098	127.0.0.1->127.0.0.1	1500	C:\WINNT\explorer.exe
AVGNT.EXE	TCP	CONN...	1104	18350	0.0.0.0->127.0.0.1	1972	D:\Program Files\AVPersonal\AVGNT.EXE
adsgone.exe	TCP	LISTEN	80	0	0.0.0.0->0.0.0.0	1572	C:\Program Files\AdsGone\adsgone.exe
adsgone.exe	UDP	CONN...	3409	3409	127.0.0.1->127.0.0.1	1572	C:\Program Files\AdsGone\adsgone.exe
IEXPLORE.EXE	UDP	CONN...	3438	3438	127.0.0.1->127.0.0.1	1284	C:\Program Files\Internet Explorer\IEXPLO...
IEXPLORE.EXE	TCP	CONN...	3455	80	0.0.0.0->209.119.54.196	1284	C:\Program Files\Internet Explorer\IEXPLO...
IEXPLORE.EXE	TCP	CONN...	3456	80	0.0.0.0->209.119.54.196	1284	C:\Program Files\Internet Explorer\IEXPLO...
IEXPLORE.EXE	TCP	CONN...	3457	80	0.0.0.0->209.119.54.196	1284	C:\Program Files\Internet Explorer\IEXPLO...
IEXPLORE.EXE	TCP	CONN...	3458	80	0.0.0.0->209.119.54.196	1284	C:\Program Files\Internet Explorer\IEXPLO...
IEXPLORE.EXE	TCP	CONN...	3459	80	0.0.0.0->209.119.54.196	1284	C:\Program Files\Internet Explorer\IEXPLO...
IEXPLORE.EXE	TCP	CONN...	3451	80	0.0.0.0->209.119.54.196	1284	C:\Program Files\Internet Explorer\IEXPLO...
IEXPLORE.EXE	TCP	CONN...	3452	80	0.0.0.0->209.119.54.196	1284	C:\Program Files\Internet Explorer\IEXPLO...
IEXPLORE.EXE	TCP	CONN...	3460	80	0.0.0.0->209.119.54.196	1284	C:\Program Files\Internet Explorer\IEXPLO...

Security Status: Normal

The context menu for Sygate Personal Firewall includes the following options:

- Block All
- Normal
- Allow All
- Applications ...
- Logs
- Options...
- Advanced Rules...
- Hide System Tray Icon
- Reset Alert
- Help Topics...
- About ...
- Exit Firewall

WARNING:
 MISCONFIGURING FIREWALL CAN LEAD TO CONNECTION PROBLEMS.
 IF YOU EXPERIENCE BIZARRE NETWORK CONNECTIVITY ISSUES,
 SWITCH FIREWALL TO 'Allow All' OR EXIT COMPLETELY

SERVICES / PORTS

Being aware of commonly used ports in day to day applications makes understanding firewall alert messages easier.

The port numbers are divided into three ranges: the Well Known Ports, the Registered Ports, and the Dynamic and/or Private Ports.

The Well Known Ports are those from 0 through 1023.

The Registered Ports are those from 1024 through 49151

The Dynamic and/or Private Ports are those from 49152 through 65535

Full list of port numbers:

<http://www.iana.org/assignments/port-numbers>

If you're running Windows NT, 2K, or XP, this file will give you a nice list:
C:\WINNT\system32\drivers\etc\services.

If you're running Windows 95, 98, or ME, look for this file:
C:\Windows\services.

If you're running any Unix, look in /etc/services.

Common Well Known Ports

Port #	Name	Comment
20	ftp-data	FTP data port
21	ftp	File Transfer Protocol (FTP) port; sometimes used by File Service Protocol (FSP)
22	ssh	Secure Shell (SSH) service
23	telnet	The Telnet service
25	smtp	Simple Mail Transfer Protocol (SMTP)
37	time	Time Protocol
42	nameserver	Internet Name Service
53	DNS	domain name services (such as BIND)
63	whois++	WHOIS++, extended WHOIS services
67	bootps	Bootstrap Protocol (BOOTP) services; also used by (DHCP) services
68	DHCP	Bootstrap (BOOTP) client; also used by (DHCP) clients
69	tftp	Trivial File Transfer Protocol (TFTP)
79	finger	Finger service for user contact information
80	http	HyperText Transfer Protocol (HTTP) for World Wide Web (WWW) services
109	pop2	Post Office Protocol version 2
110	pop3	Post Office Protocol version 3
115	sftp	Secure File Transfer Protocol (SFTP) services
119	nntp	Network News Transfer Protocol (NNTP) for the USENET discussion system
123	ntp	Network Time Protocol (NTP)
137	netbios-ns	NETBIOS Name Services
138	netbios-dgm	NETBIOS Datagram Services
139	netbios-ssn	NETBIOS Session Services
143	imap	Internet Message Access Protocol (IMAP)
161	snmp	Simple Network Management Protocol (SNMP)
220	imap3	Internet Message Access Protocol version 3
389	ldap	Lightweight Directory Access Protocol (LDAP)
443	SSL	Secure Hypertext Transfer Protocol (HTTP)
445	SMB	Server Message Block (SMB) over TCP/IP
992	telnets	Telnet over Secure Sockets Layer (TelnetS)
993	imaps	Internet Message Access Protocol over Secure Sockets Layer (IMAPS)
995	pop3s	Post Office Protocol version 3 over Secure Sockets Layer (POP3S)

ACTIVE PORTS

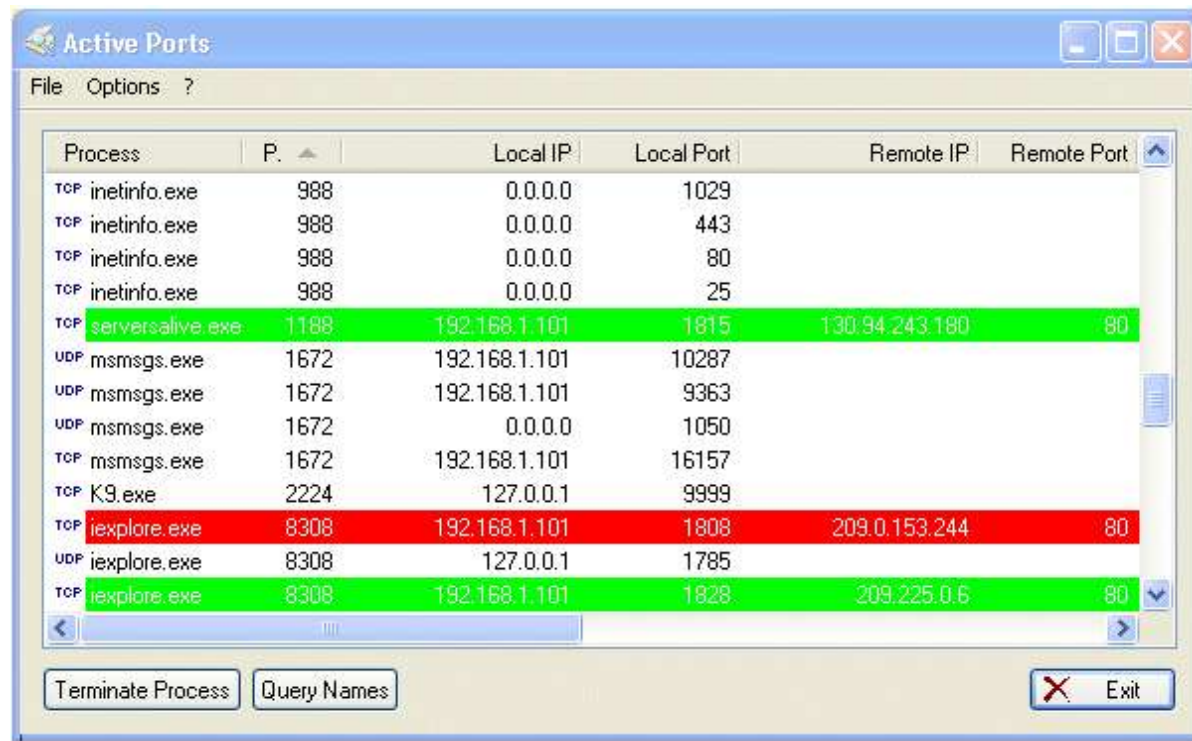
(freeware)

Easy to use tool that enables you to monitor all open TCP/IP and UDP ports on the local computer.

Active Ports maps ports to the owning application so you can watch which process has opened which port.

It also displays a local and remote IP address for each connection and allows you to close any port.

Active Ports can help you to detect trojans and other malicious programs.



<http://www.snapfiles.com/get/activeports.html>

LAUNCHER

Create a directory **C:\LAUNCHER** and create a shortcut to it on the desktop

Add this directory to your PATH.

Place shortcuts to your most commonly used applications in this folder, and rename them to easily remembered names.

You can now directly start these programs from the run command window by typing in their name.

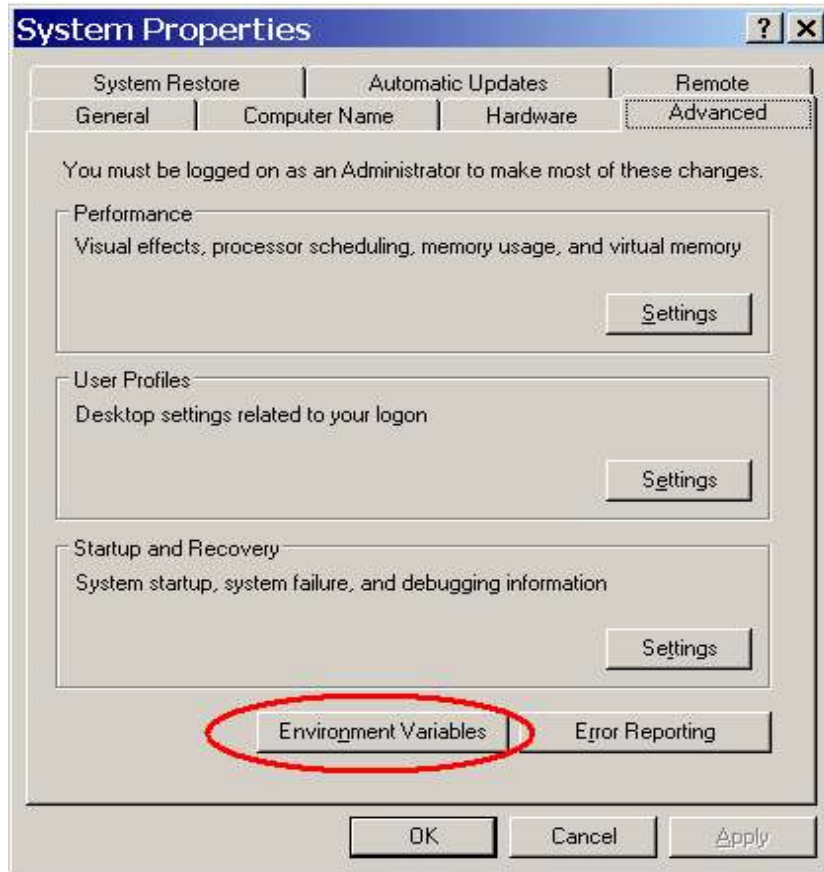


SETTING PATH ENVIRONMENT VARIABLE (windows)

The PATH environment variable is a list of directory names.

On a DOS\Windows system the names are separated by **semi-colons** ; eg:

C:\WINNT;C:\Program Files;C:\Launcher;D:\Program Files;



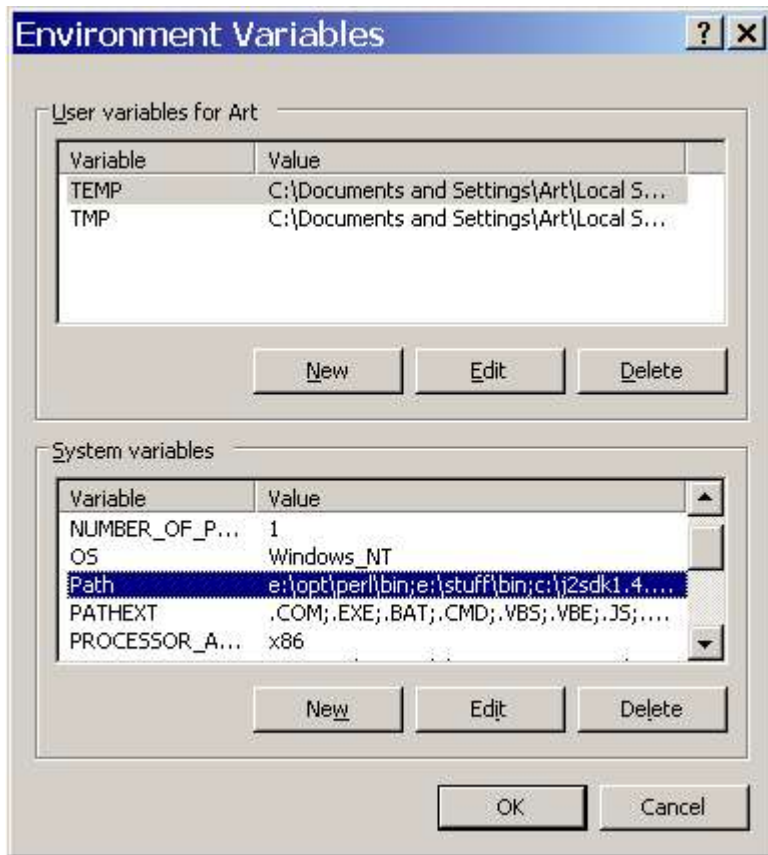
When using the command line, you need to have the PATH variable set.

When you enter a command, the system looks inside each directory named in the PATH environment variable in an attempt to locate a program by the name of the command.

Setting PATH variable (NT/2K/XP)

1. Start > Settings > Control Panel > System > Select Advanced Tab

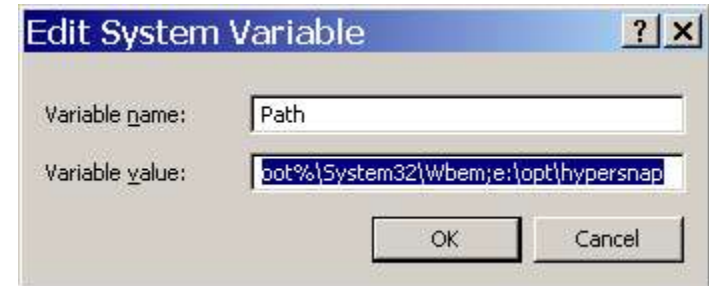
2. Select Environment Variables button to bring up window



3. In the lower half of the Environment Variables window, select PATH and press the Edit button

4. Append the full directory path to the end of the PATH variable, when done, press OK.

Reboot if necessary.



WARNING:

Be careful that you don't erase something that's already there, unless you know **exactly** what it is. You may accidentally disable something you are using elsewhere.

DO NOT FORGET THE SEMI COLONS ;

ADVANCED IP SCANNER

(freeware)

Advanced IP Scanner is a fast, robust and easy-to use Windows LAN scanner. It easily lets you have various types of information about local network computers in a few seconds!

Powered with multi-thread scan technology, this program can scan hundreds of computers per second, allowing you to scan 'C' or even 'B' class networks even from your modem connection.

Use it to monitor your LAN for active systems.

Features:

Fast and stable multi threaded IP scanning

Remote Shutdown

Wake on LAN

Group operations

List saving

Radmin integration

Also available freeware IP Calculator, Port Scanner and LAN Scanner

<http://www.radmin.com/radmin/utility/index.php>

Advanced IP Scanner v1.2

File Commands Options Help

Control remote computers in real time!
Remote Administrator 2.1

Select range: 192.168.0.1 to 192.168.0.254

Use this name to get IP:

Scan results:

IP	Status	Name	Ping	NetBIOS user	NetBIOS com...	MAC address
192.168.0.1	alive	C/R	63			00-00-00-00-00-00
192.168.0.5	alive	C/R	62			00-00-00-00-00-00
192.168.0.100	alive	KITCHEN	94	DOG	KITCHEN	00-0D-88-5E-EA-4D
192.168.0.102	alive	BRITTANY	0	ADMINISTRAT...	BRITTANY	00-A0-CC-62-87-08
192.168.0.103	alive	PRINTER	0	MINDTEL	PRINTER	00-40-F4-68-F5-D8

IP	Status	Name	Ping	NetBIOS user	NetBIOS comp...	NetBIOS group
----	--------	------	------	--------------	-----------------	---------------

Advanced LAN Scanner v1.0 BETA 1

File Options Tools Help

192.168.0.1-192.168.0.255

192.168.0.2 (ORSINI) (Windows XP) (Logged in) Ports (scanned 66 of 66, open)

- Domain: MYOFFICE
- Open ports (4)
 - 135 Open (loc-srv)
 - 139 Open (netbios-ssn)
 - 445 Open (microsoft-ds)
 - 1025 Open (Microsoft ADL)
- Closed ports (62)
- NetBIOS names (6)
- Transports (2)
 - \Device\NetbiosSmb
 - \Device\NetBT Tcpiip {2ED6249A-055F-4909-BF9C-199B314D9088}

Scanning (64 threads)



ANTIVIR PERSONAL EDITION

(free for personal non commercial use)

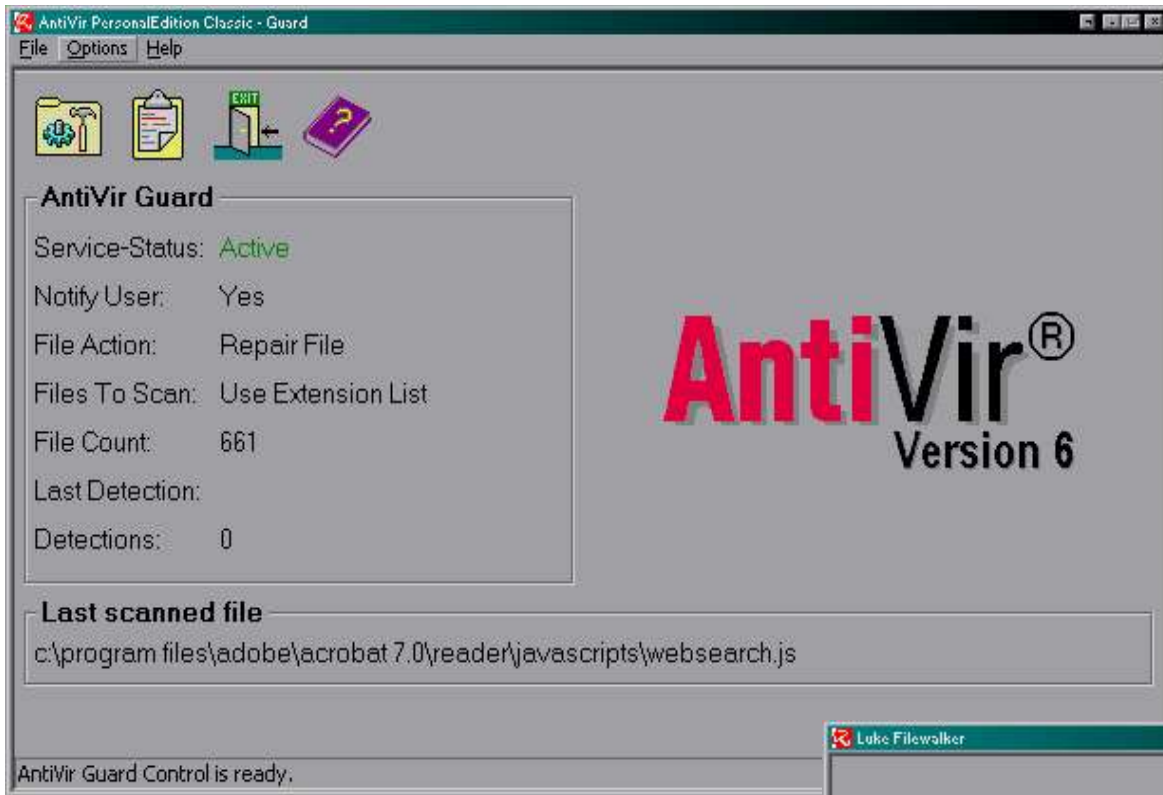
German company H+BEDV Datentechnik GmbH provides enterprise class antivirus software.

Provides freeware personal-use-only version for non commercial use.

- Detects and removes more than 70,000 viruses
- Always among the winners of comparison test featured in computer journals
- Resident Virus Guard serves to monitor file movements automatically, e.g. downloading of data from the Internet
- Scanning and repair of macro viruses
- Protection against previously unknown macro viruses
- Easy operation
- Internet-Update Wizard for easy updating
- Protection against previously unknown boot record viruses and master boot record viruses
- Support is free of charge via AntiVir Bulletin Board

<http://www.free-av.de/>

<http://www.free-av.com/>



Active Guard
runs in background
scanning all files on
read / write



Luke Filewalker:
system scanner

AD-AWARE PERSONAL EDITION

(free for non-commercial use)



Ad-Aware is designed to provide advanced protection from known Data-mining, aggressive advertising, Parasites, Scumware, selected traditional Trojans, Dialers, Malware, Browser hijackers, and tracking components.

Ad-Aware Personal Edition boasts a number of improvements.

Extended memory scanning now scans all modules loaded by a process.

Scanning uses the all- new CSI (Code Sequence Identification) technology to identify new and unknown variants of known targets.

Extended registry scanning now scans registry branches of multiple-user accounts and performs additional smart checks to detect dynamically created references.

Scanning speed is noticeably faster, and this version offers an Extended Scanning mode for known and unknown/possible browser hijackers.

Ad-aware SE does an excellent job of quickly finding and removing most adware and spyware components, although you will have to restart and rescan for a seriously infected machine.

Program includes auto-update feature included with the program, keeping Ad-aware up-to-date with the latest adware components.

<http://www.lavasoftusa.com/>

Ad-aware 6.0 Personal

Ad-aware 6.0

Copyright 2000-2003 Lavasoft Sweden. All rights reserved.

Scan complete

Current operation

Finished Objects scanned: **160047**

C:\MATLAB6p5\uninstall\images\

Summary

42 Running processes	0 Processes identified
13 Objects recognized	1 Registry keys identified
0 Objects ignored	0 Registry values identified
13 New objects	12 Files identified
	0 Folders identified

13 items. Show logfile Next

Ad-aware 6 Personal, Build 162

Navigation icons: Home, Back, Forward, Stop, Refresh, Help

Scan now Ad-watch Plug-ins

Scanning results

Obj	Vendor	Type	Category	Object	Com...
<input checked="" type="checkbox"/>	Alexa	RegKey	Data Miner	HKEY_LOCAL_MACHINE:SO...	
<input type="checkbox"/>	Tracking Co...	File	Data Miner	c:\windows\cookies\default...	
<input type="checkbox"/>	Tracking Co...	File	Data Miner	c:\windows\cookies\damona...	
<input type="checkbox"/>	Tracking Co...	File	Data Miner	c:\windows\cookies\damon...	
<input type="checkbox"/>	Tracking Co...	File	Data Miner	c:\windows\cookies\damon...	
<input type="checkbox"/>	Tracking Co...	File	Data Miner	c:\windows\cookies\damon...	
<input type="checkbox"/>	Tracking Co...	File	Data Miner	c:\windows\cookies\damon...	
<input type="checkbox"/>	Tracking Co...	File	Data Miner	c:\windows\cookies\damon...	
<input type="checkbox"/>	Tracking Co...	File	Data Miner	c:\windows\cookies\damon...	
<input type="checkbox"/>	Tracking Co...	File	Data Miner	c:\windows\cookies\damon...	
<input type="checkbox"/>	Tracking Co...	File	Data Miner	c:\windows\cookies\damon...	
<input type="checkbox"/>	Tracking Co...	File	Data Miner	c:\windows\cookies\damon...	
<input type="checkbox"/>	Tracking Co...	File	Data Miner	c:\windows\cookies\damon...	
<input type="checkbox"/>	Tracking Co...	File	Data Miner	c:\windows\cookies\damon...	

13 items. Quarantine Show logfile Next

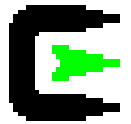
Ad-aware 6 Personal, Build 162

Ad-aware 6

13 objects will be removed. Continue?

OK Cancel





CYGWIN

(freeware)

Cygwin is a Unix-like environment for Windows. It consists of two parts:

A DLL (cygwin1.dll) which acts as a unix API emulation layer providing substantial linux API functionality.

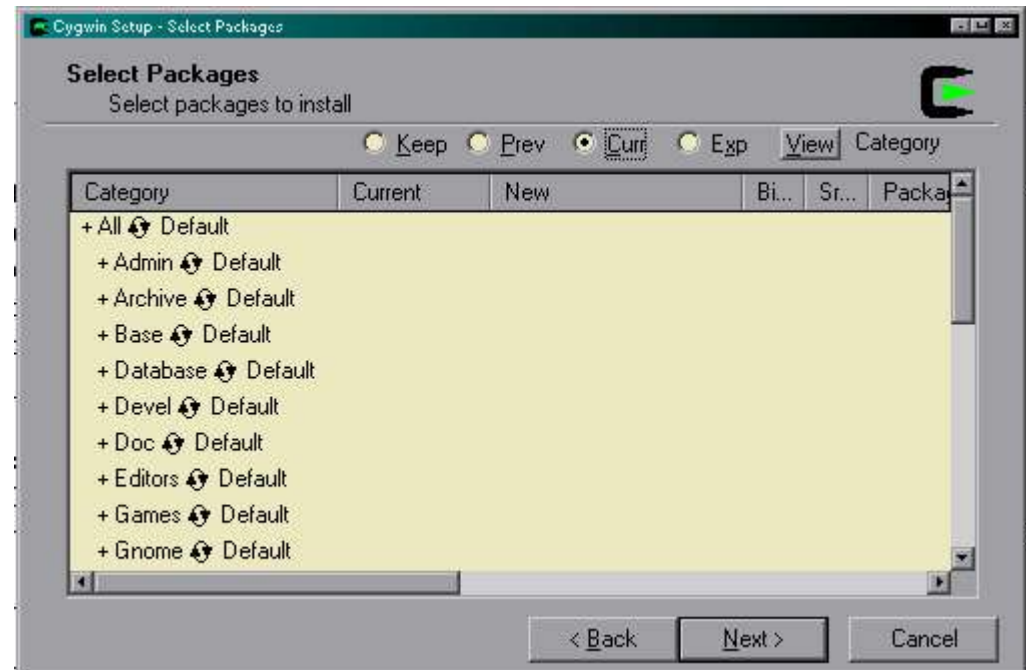
A collection of tools, which provide Linux look and feel.

The Cygwin DLL works with all non-beta, non "release candidate", ix86 32 bit versions of Windows.

Cygwin is not a way to run native linux apps on Windows.

You have to rebuild app from source if you want it to run on Windows.

Install is similar to a linux installation, with user able to select packages to be included. Web packages include apache, lynx, wget and other standard unix distribution packages.



<http://cygwin.com/>



GNU + Cygnus
+ Windows =

cygwin™

DROP TO DOS

(freeware)

Adds 'Drop to DOS' menu item to windows right click context menu.

Allows you to right click on any folder and choose the Drop to DOS option to go to a command prompt within that folder.

<http://www.terabyteunlimited.com/downloads/DOSDROP.ZIP>

UNIX UTILS – GNU utilities for Win32

Ports of common GNU utilities to native Win32. The executables only depend on the Microsoft C-runtime (msvcrt.dll) and not an emulation layer like Cygwin. Install base UnxUtils.zip then UnxUpdates.zip, and add the unxutils directories to your PATH

bc | bison | bzip | diffutils | fileutils | findutils | flex | gawk | grep | gzip | less | make | sed | shellutils | tar | textutils | unrar | wget | which | zsh

<http://unxutils.sourceforge.net/UnxUtils.html>

EXAMPLE: GETTING .SWF FILE FROM WEBPAGE

1. View html source of page of interest, locate filename.swf path
2. Reconstruct url to swf file
3. Drop to dos and enter:

```
wget http://path.to.file/filename.swf
```


HTTrack WEBSITE COPIER

(freeware)



HTTrack is a free (GPL) and easy-to-use offline browser utility.

It allows you to download a World Wide Web site from the Internet to a local directory, building recursively all directories, getting HTML, images, and other files from the server to your computer.

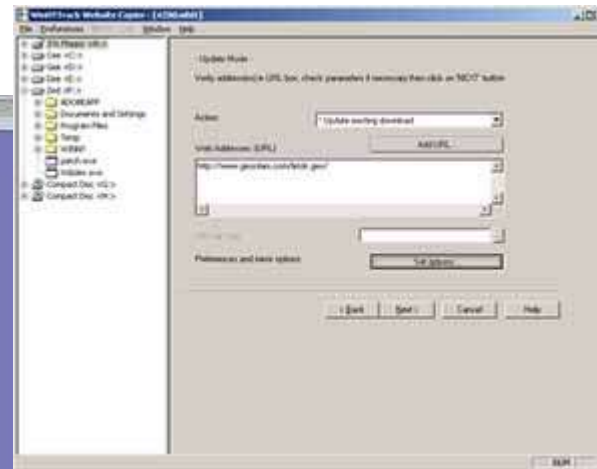
HTTrack arranges the original site's relative link-structure. Simply open a page of the "mirrored" website in your browser, and you can browse the site from link to link, as if you were viewing it online.

HTTrack can also update an existing mirrored site, and resume interrupted downloads.

HTTrack is fully configurable, and has an integrated help system.

HTTrack integrates with Internet Explorer, allowing users ability to launch a mirror operation directly from within the web browser.

<http://www.httrack.com/>



Bytes saved: 60,00KB Links scanned: 3/35
 Time: 19s Active connections: 16
 Transfer rate: 6,44KB/s

Actions:

request	www.pioneeranimation.com/default.htm	<div style="width: 10px; height: 10px; background-color: #008080;"></div>	SKIP
receive	www.pioneeranimation.com/catalog/index.htm	<div style="width: 10px; height: 10px; background-color: #008080;"></div>	SKIP
receive	www.pioneeranimation.com/catalog/new_releases.htm	<div style="width: 20px; height: 10px; background-color: #008080;"></div>	SKIP
receive	www.pioneeranimation.com/catalog/upcoming.htm	<div style="width: 20px; height: 10px; background-color: #008080;"></div>	SKIP
receive	www.pioneeranimation.com/extras/previews/index.htm	<div style="width: 20px; height: 10px; background-color: #008080;"></div>	SKIP
receive	www.pioneeranimation.com/faq.htm	<div style="width: 30px; height: 10px; background-color: #008080;"></div>	SKIP
receive	www.pioneeranimation.com/help.htm	<div style="width: 10px; height: 10px; background-color: #008080;"></div>	SKIP
receive	www.pioneeranimation.com/titles/sol_bianca/sol_bianca_01.htm	<div style="width: 10px; height: 10px; background-color: #008080;"></div>	SKIP
receive	www.pioneeranimation.com/titles/trigun/trigun_01.htm	<div style="width: 30px; height: 10px; background-color: #008080;"></div>	SKIP
request	www.pioneeranimation.com/images/pioneer_logo_w.gif	<div style="width: 20px; height: 10px; background-color: #008080;"></div>	SKIP
request	www.pioneeranimation.com/images/one_pix.gif	<div style="width: 10px; height: 10px; background-color: #008080;"></div>	SKIP
request	www.pioneeranimation.com/news/index.htm	<div style="width: 10px; height: 10px; background-color: #008080;"></div>	SKIP
connect	www.pioneeranimation.com/extras/contest/index.htm	<div style="width: 30px; height: 10px; background-color: #008080;"></div>	SKIP
connect	www.pioneeranimation.com/links.htm	<div style="width: 20px; height: 10px; background-color: #008080;"></div>	SKIP

NET SNIPPETS



(freeware | standard | professional)

- Capture Content from any Source and Format into One Location.
 - Select text and images from a web page, or capture entire web pages
 - Web Links (Favorites/Bookmarks)
 - Capture entire files (PDF, Office, Video, Audio, email)
 - Select text and images from files
- Drag & Drop interface allows you to capture content from any source and format right inside the browser or on your Desktop.
- Refine, Focus and add Metadata.
 - Edit content using a built-in HTML Editor
 - Add your personal comments ,specify Keywords
 - Define custom information for every item collected
 - Add Bibliographic Information
- Refine the information. Save only the relevant parts. Highlight important sections and add your personal comments.
- Automatically save source information and other metadata along with every information item.
- Generate bibliography reports (MLA, APA & Chicago Style).
- Package snippets, entire folders or complex reports into one file and e-mail your colleagues.

<http://www.netsnippets.com/>

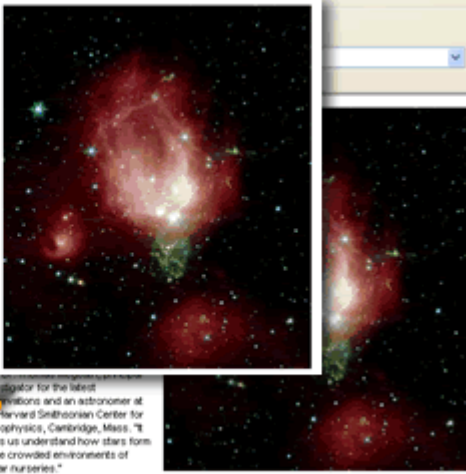
NASA - Spitzer Space Telescope Sends Rosy Valentine - Microsoft Internet Explorer

Address: <http://www.nasa.gov/visitor/universe>

Valentines come in all shapes and sizes from paper hearts to candlelit dinners — and now stellar nurseries resembling shimmering pink rosebuds. NASA's Spitzer Space Telescope, formerly known as the Space Infrared Telescope Facility, has captured with its infrared eyes a pink and green rose-like picture of a cluster of newborn stars known as a nebula.

The Valentine's Day image is available online at <http://www.spitzer.caltech.edu> and <http://photojournal.jpl.nasa.gov/catalog/PIA05206>.

"The picture is more than just pretty," said Dr. Thomas Megeath, principal investigator for the latest observations and an astronomer at the Harvard Smithsonian Center for Astrophysics, Cambridge, Mass. "It helps us understand how stars form in the crowded environments of stellar nurseries."



Investigator for the latest observations and an astronomer at Harvard Smithsonian Center for Astrophysics, Cambridge, Mass. "It helps us understand how stars form in the crowded environments of stellar nurseries."

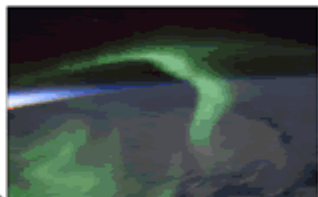


New Snippet - A glance through the north-facing

Change Formatting | Highlight | Select All | B | I | U | - | + | < | >

A glance through the **north-facing** window was a sight to behold. We were glowing fog of red. It was like we had been shrunk down to some **miniatur** and inserted into the tube of a neon sign. And it was just on the other side of the windowpane ... we wanted to reach out and touch! Afterwards, I had to clean a nose print off of the window.

The ISS-6 crew enjoyed this green aurora dancing over the night side of the **Earth just after sunset**. The reds and blues of sunset light up the air layer to the west.



For a few days, our viewing geometry was such that we enjoyed a celestial treat: we could see at the same time the green glow of auroras and the iridescent layers of orange and blue of the Earth's horizon at sunset. It was as if **Iris** and her sister of the night were having a brief conversation.

General | Source | Keywords | Custom Information | Abstract

Name: A glance through the north-facing

Comments: Viewing Geometry

Importance: Medium | Add To: My Snippets | Browse...

Save | Cancel

www.netinsights.com

Space Exploration

Net Snippets

Table of Contents

1. [Earth](#)
 - 1.1. [Planetary System](#)
 - 1.2. [Surface Features of the Earth](#)
2. [The Sun](#)
 - 2.1. [Extreme Ultraviolet Imaging](#)
 - 2.2. [July 14, 2000 -- This morning](#)
 - 2.3. [Shuttle external tank deal](#)

NASA has extended to September 2008 its six-year, \$1.15 billion contract with Lockheed Martin Space Systems, New Orleans, to provide 35 Super Lightweight External Tanks for the Space Shuttle Program.
3. [Bibliography](#)

1. [Earth](#) ^Top


1.1. [Planetary System](#) ^Top

Title: CNN.com - Planetary system found that resembles ours - June 13, 2002
 URL: <http://www.cnn.com/2002/TECH/space/06/13/new.planets/index.html>
 Title: CNN.com - Planetary system found that resembles ours - June 13, 2002
 URL: <http://www.spaceflightnow.com/>

Planetary system found that resembles ours

June 13, 2002 Posted: 5:13 PM EDT (2113 GMT)

June 13, 2002 Posted: 5:13 PM EDT (2113 GMT)



Source: [Z References](#)

Created: 15/02/2004, 10:11 | Keywords:

Comments: X

My Computer



NETFILE HTTP / FTP SERVER

(freeware | professional)

Internet's easiest-to-setup and use Windows FTP/Web server to transfer and manage files

Secure, ultra-fast FTP server with XML remote admin, virtual links, quotas, bandwidth limits, authentication and fast directory and file caches.

Runs as window-service, and controlled through a C++/HTTP/XML interface Setup and be up and running in less than 5-10 minutes compared to 2 hours calculated for other web servers.

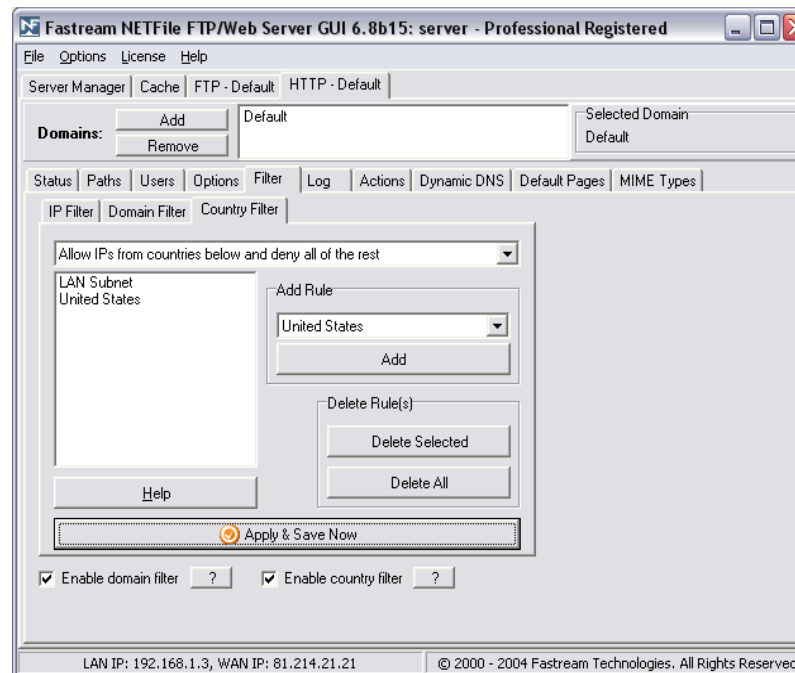
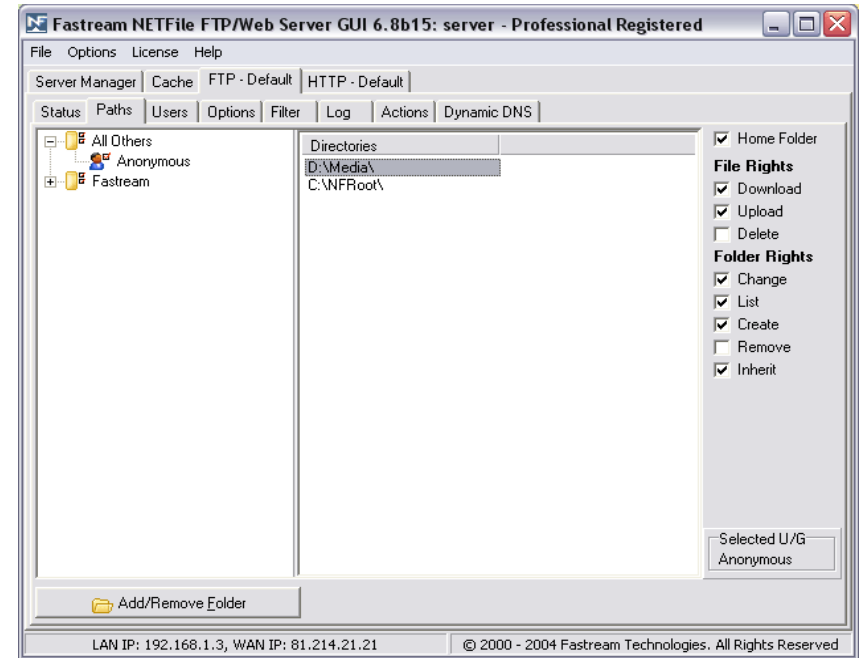
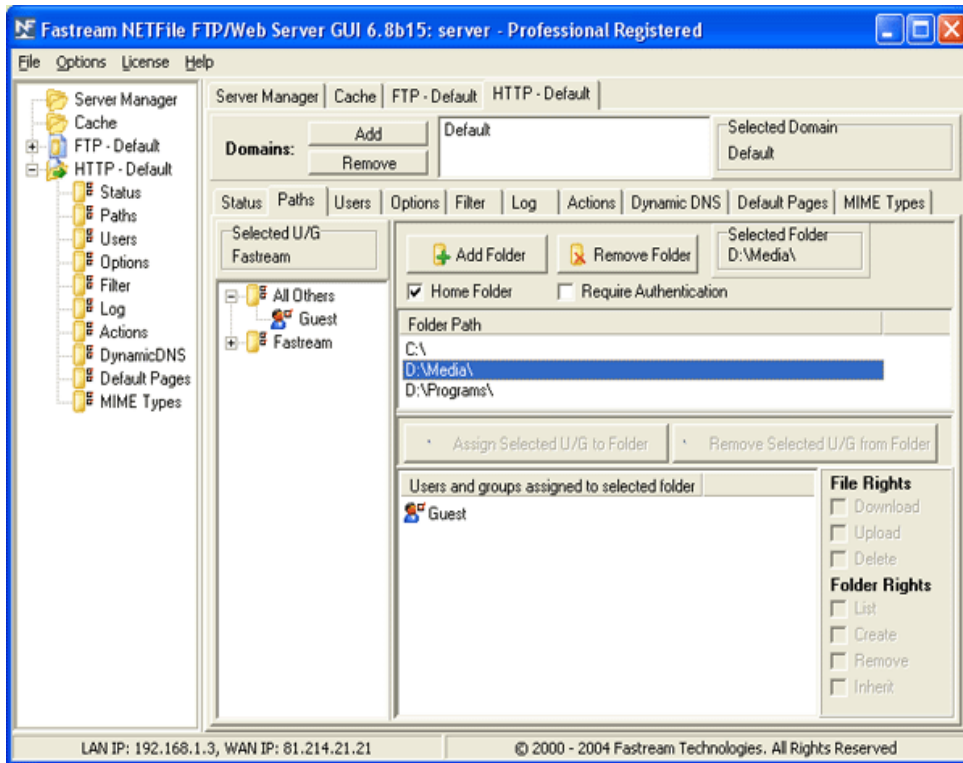
Free version has 4 simultaneous connections and 5 users per server limits. The freeware version is not intended for business users.

Configuration is simply a matter of selecting directories to be made available by either the webserver or the ftp server. Access restrictions and group authorization is easy to configure.

Useful for file sharing on a network when other windows networking options are either not available or not suitable.



<http://www.fastream.com/netfileserver.htm>





REMOTE CONTROL: REAL VNC

(freeware)

VNC (Virtual Network Computing) is remote control software which allows you to view and interact with one computer (the "server") using a simple program (the "viewer") on another computer anywhere on the Internet. The two computers don't even have to be the same type, so for example you can use VNC to view an office Linux machine on your Windows PC at home

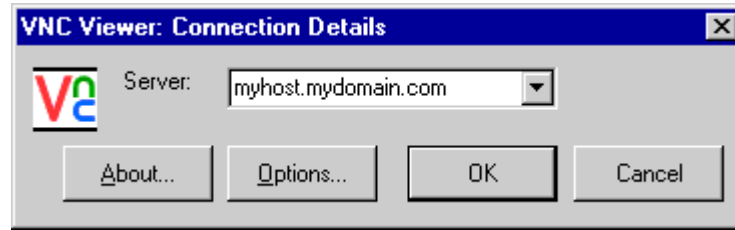
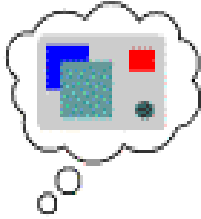
For ultimate simplicity, there is even a Java viewer, so that any desktop can be controlled remotely from within a browser without having to install software.

VNC has a wide range of applications including system administration, IT support and helpdesks. It can also be used to support the mobile user, both for hot desking within the enterprise and also to provide remote access at home, or on the road. The system allows several connections to the same desktop, providing an invaluable tool for collaborative or shared working in the workplace or classroom.

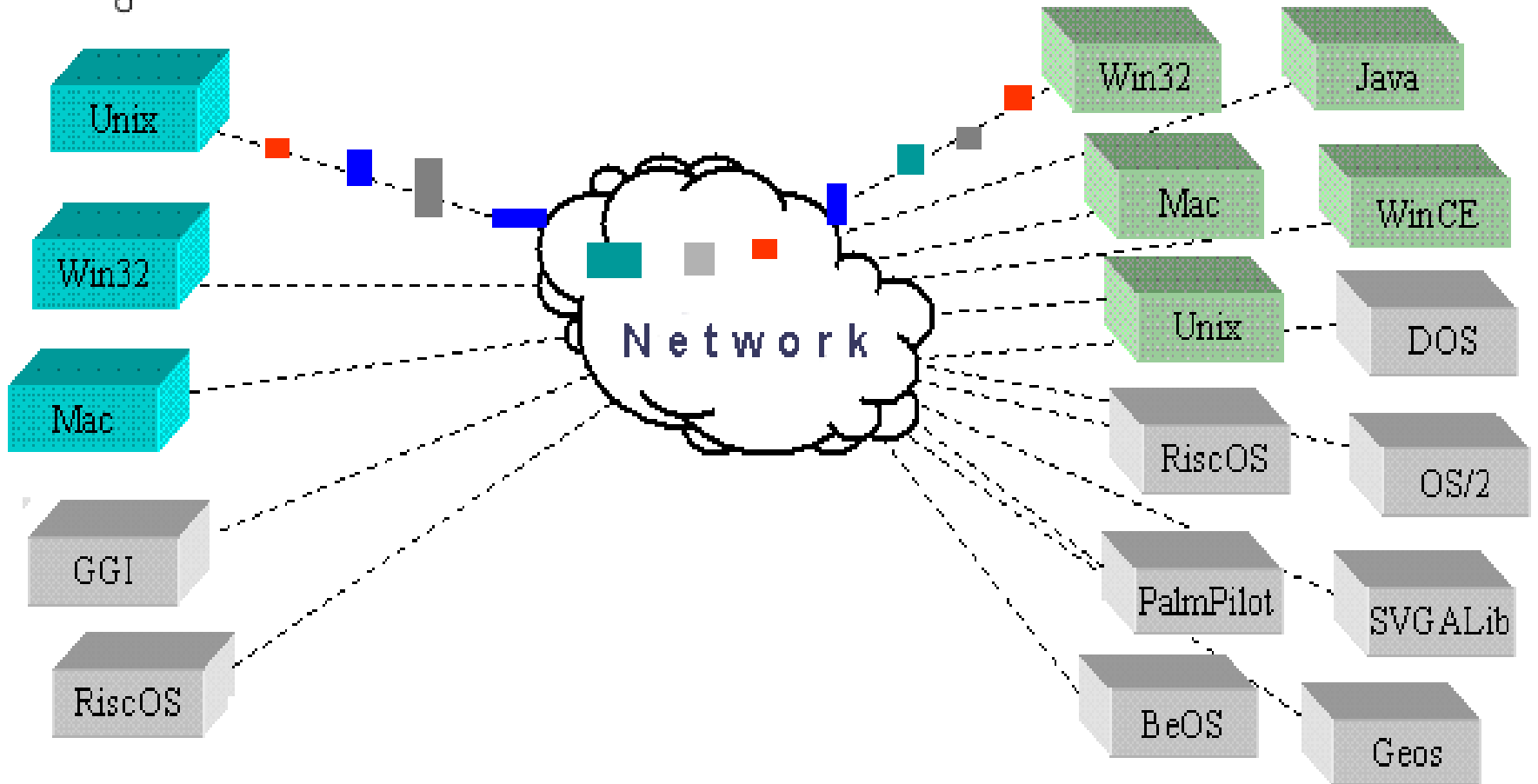
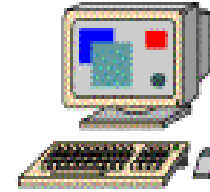
The open source version of VNC has been freely available since 1998, and more than 20 million copies of the software have been downloaded. It is in active use by many millions in industry, commerce, education and at home. Virtually all Fortune 500 companies use VNC, and installations of VNC across thousands of workstations are commonplace.

<http://www.realvnc.com>

Server



Viewer



REMOTE CONTROL: RADMIN

(\$)



Fast, reliable, easy-to-use pc remote control software.

Radmin allows you to take control of another PC on a LAN, WAN or dial-up connection so you see the remote computer's screen on your monitor and all your mouse movements and keystrokes are directly transferred to the remote machine.

Radmin provides fast secure (128 bit encryption) access to remote PC's on Windows platforms.

A 56K modem is fast enough to provide 5-10 screen updates a second.

On a LAN, real-time speeds of 100 - 500 screen updates per second are normal.

Radmin's speed can be adjusted up or down to save your bandwidth.

Features:

PC remote access and remote control.

Transferring files to and from remote locations.

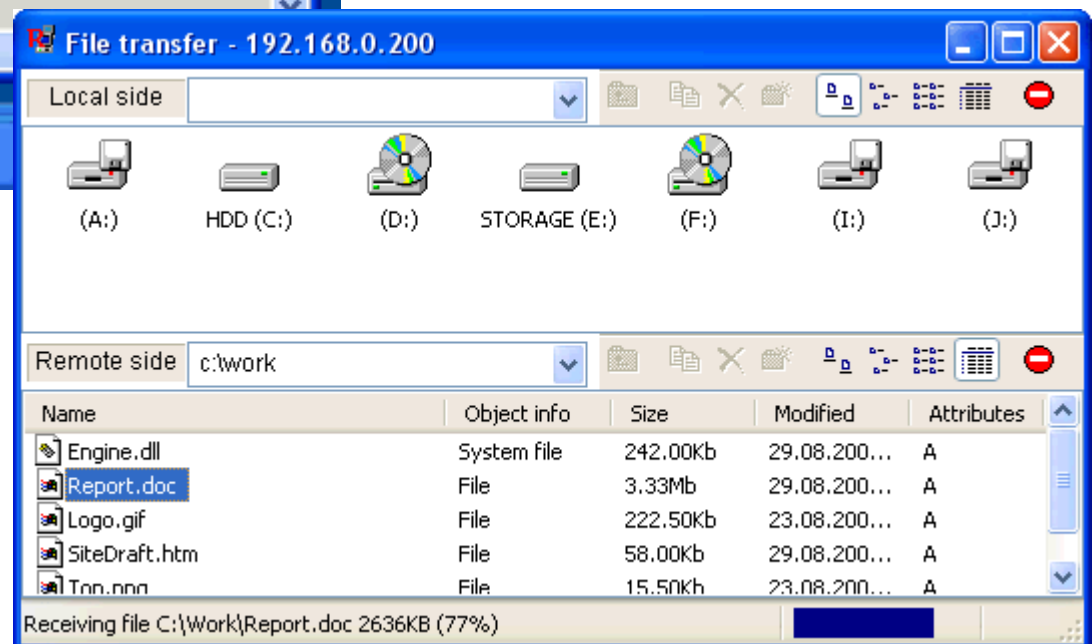
System administration and network management.

Helpdesk services (support your customers remotely).

Telecommuting (access your office PC from home).



<http://www.radmin.com/download/>





SNAGIT SCREEN CAPTURE

(\$)

Snagit captures various types of data in dozens of different ways, allowing you to capture and edit anything on your screen. Built in image editor makes immediate image editing easy and rapid.

Region Capture

Capture a rectangular shape anywhere on your desktop.

Scrolling Window Capture

Capture the contents of a window, including the part not seen.

Menu Capture

Capture drop-down and cascading menus from Windows programs.

Text Capture

Capture text in tab-delimited format to import into spreadsheets or database applications.

Object Capture

Capture a specific item on your computer desktop, such as a button, icon, toolbar, etc.

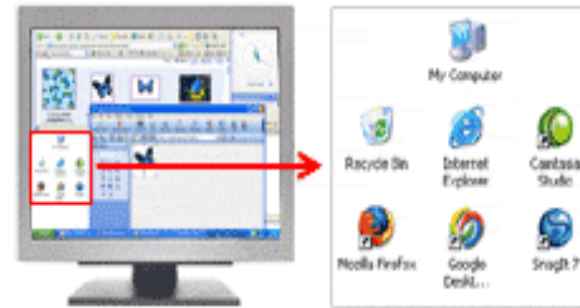
Timed Captures

Timer allows captures at time intervals from seconds to hours

Multiple Outputs

Save files to multiple output formats, including ftp to external servers

<http://www.techsmith.com/products/snagit/>



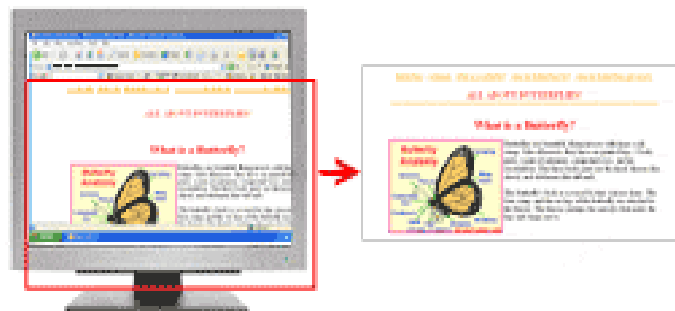
Clipboard

Snagit Studio

Snagit Editor

Save as a File
Snagit Catalog

Send an E-mail
Post to Web Site
Send to Printer



SMART FTP: FTP CLIENT

(free for personal /educational / non-profit)



Secure Connections (TLS / SSL)

Drag & Drop

Multiple Connections

Auto reconnect and resume of broken transfers

Verified Transfers (XCRC)

FXP support

Remote Edit

Enhanced NAT/UPnP Support

UPnP (Universal Plug and Play), ICS, ICF

Transfer Queue

- Scheduling
- Uploads/Downloads/FXP
- Unlimited simultaneous threads

Proxy / Firewall support

SOCKS5, SOCKS4, SOCKS4A, HTTP Proxy

Wingate, Winproxy, CSM, Checkpoint FW-1, Raptor

On-the-fly Compression (MODE Z)

Backup Tool

URL Watcher

Cache Remote Directories

FTP command line

Custom Commands

<http://www.smartftp.com/download/>

SmartFTP v1.0

FTP Commands View Tools Favorites Window Help

Address: ftp.microsoft.com/ Login: anonymous Password: ***** Port: 21 Anonymous

ftp.smartftp.com : anonymous

Name	Size	Type/Description	Date	Permiss...	O...	Gr...
Parent Folder						
Addons		File Folder	12/17/2002 0:00 AM	drw-rw-rw-	user	group
ResEng		File Folder	7/10/2003 22:45 PM	drw-rw-rw-	user	group
RFC		File Folder	6/7/2003 3:35 AM	drw-rw-rw-	user	group
UTF8		File Folder	2/2/2003 0:00 AM	drw-rw-rw-	user	group
backtool.cab	190 KB	WinRAR archive	8/7/2003 22:16 PM	-rw-rw-rw-	user	group
bg0001.cab	67.6 KB	WinRAR archive	5/11/2001 0:00 AM	-rw-rw-rw-	user	group
History.txt	9.92 KB	Text Document	9/14/2003 13:44 PM	-rw-rw-rw-	user	group
hook0002.cab	21.8 KB	WinRAR archive	2/3/2003 0:00 AM	-rw-rw-rw-	user	group
License.txt	11.2 KB	Text Document	3/19/2003 0:00 AM	-rw-rw-rw-	user	group

```

[12:58:48] Opening data connection IP: 195.141.200.6/15.165 PORT: 4025
[12:58:48] LIST -aL
[12:58:48] 150 Opening ASCII mode data connection for /bin/ls.
[12:58:48] 1800 bytes received successfully. (1.76 KB/s) (00:00:01).
[12:58:49] 226 Transfer complete.
  
```

Log Session Queue /SmartFTP 25 Object(s) Total: 28.5 MB 00:02:04

ftp.microsoft.com : anonymous

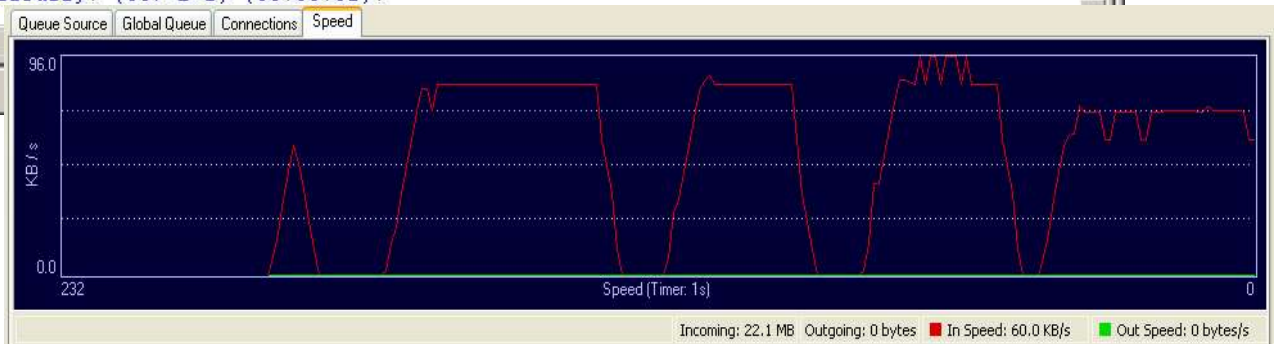
Name	Size	Type/Descr...	Date	Permi...	Ow...	Gr...
Parent Folder						
list.txt	324 bytes	Text Document	11/10/1997 0:00 AM	-r-xr-xr-x	owner	group
vssp3_1.exe	9.63 MB	Application	11/18/1997 0:00 AM	-r-xr-xr-x	owner	group
vssp3_2.cab	9.53 MB	WinRAR archive	11/18/1997 0:00 AM	-r-xr-xr-x	owner	group
vssp3_3.cab	9.53 MB	WinRAR archive	11/18/1997 0:00 AM	-r-xr-xr-x	owner	group
vssp3_4.cab	9.10 MB	WinRAR archive	11/18/1997 0:00 AM	-r-xr-xr-x	owner	group

```

[12:58:44] Opening data connection IP: 207.46.133.140/55.160 PORT: 14240.
[12:58:44] LIST -aL
[12:58:44] 125 Data connection already open; Transfer starting.
[12:58:44] 357 bytes received successfully. (357 B/s) (00:00:01).
[12:58:44] 226 Transfer complete.
  
```

Log Session Queue /developr/visualstudio/sp3/core

ftp.smartftp.com | ftp.microsoft.com





1-4a RENAME

(freeware)

Batch File renamer for large file numbers, works in networks and subdirectories.

Insert any text at any position or replace any text by any text, before or after original filename.

Process only names / only extensions / whole filenames

Change case

Insert filename functions

Number / Renumber

Swap parts within filenames

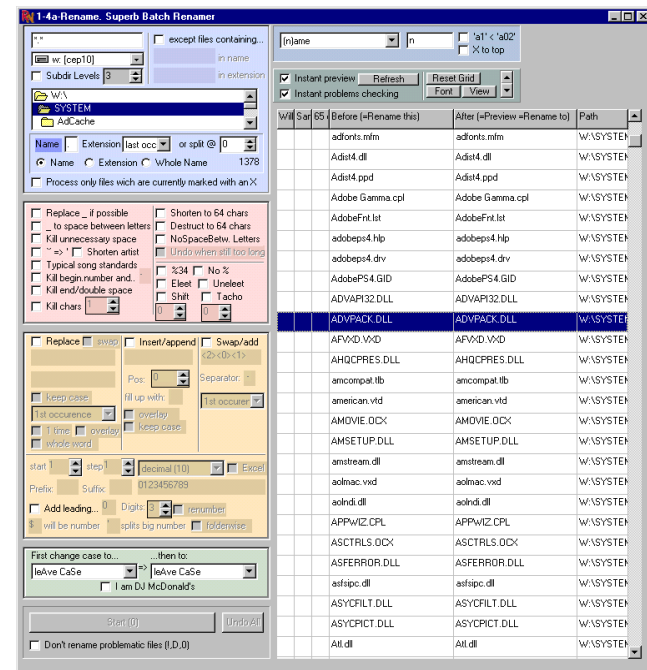
Extremely fast sorting

Sort by value, not by ASCII character

Sort by name, then extension

Enhanced sort options

Instant previews



<http://www.1-4a.com/rename/>

1-4a-Rename. Superb Batch Renamer

define exceptions
 except files containing 'w' in name

Preview column: You don't have to rename to see the result => No danger!

perfect for mp3 files or any other type of file

These files will be renamed

before & after (simulated renaming)

Press here to rename 22 files. Made a mistake? Undo it!

File Name	Before (=Rename this)	After (=Preview =Rename to)	Path
Q_ns.cur	Q_ns.cur	Q_ns.cur	W:\CURSORS\
R_no.cur	R_no.cur	R_no.cur	W:\CURSORS\
R_ns.cur	R_ns.cur	R_ns.cur	W:\CURSORS\
UP_1.CUR	UP_1.CUR	UP_1.CUR	W:\CURSORS\
UP_L.CUR	UP_L.CUR	UP_L.CUR	W:\CURSORS\
UP_M.CUR	UP_M.CUR	UP_M.CUR	W:\CURSORS\
info.txt	info.txt	info.txt	W:\wt\
XENU.INI	XENU.INI	XENU.INI	W:\
TIPS.GIF	TIPS.GIF	TIPS.GIF	W:\Web\
TAPI.INF	TAPI.INF	TAPI.INF	W:\VNF\
UDBC.INI	UDBC.INI	UDBC.INI	W:\
MSFS.CNT	MSFS.CNT	MSFS.CNT	W:\HELP\
CLIP.INF	CLIP.INF	CLIP.INF	W:\VNF\
S_no.cur	S_no.cur	S_no.cur	W:\CURSORS\
S_ns.cur	S_ns.cur	S_ns.cur	W:\CURSORS\
data.wts	data.wts	!!ata.wts	W:\wt\
DRUM.ANI	DRUM.ANI	DRUM.ANI	W:\CURSORS\
RAIN.ANI	RAIN.ANI	RAIN.ANI	W:\CURSORS\
d3dx.dat	d3dx.dat	!!3!!x.dat	W:\
MSDX.INF	MSDX.INF	MS!!X.INF	W:\VNF\
SHOE.ANI	SHOE.ANI	SHOE.ANI	W:\CURSORS\
YOYO.ANI	YOYO.ANI	YOYO.ANI	W:\CURSORS\
YOYO.ANI	YOYO.ANI	YOYO.ANI	W:\CURSORS\

(\$)

ANONYMIZER[®]

Home Products Support Press Enterprise LOGIN ABOUT US

Home > Products

3-in-1 Protection is here with Anonymizer's Safe Surfing Suite
featuring the NEW Anonymizer 2005

Anonymizer 2005 - Prevent identity theft and defend yourself from hackers
SpyWare Killer - Remove hidden spyware, malware, adware and more
Total System Sweeper - Clean tracking bugs & secure your personal information

UPGRADE NOW! You **SAVE \$40** on this 3-in-1 bundle!

Control Panel

- [Change E-Mail/Password](#)
- [My Downloads](#)
- [My Subscriptions](#)
- [Send Anonymous E-mail](#)
- [View Cookies](#)
- [Logout](#)

Support Center

For help with a specific service, product or feature, please select from this list:

- [Anonymizer 2004](#)
- [Privacy Manager](#)
- [Private Surfing](#)
- [Privacy Toolbar](#)
- [Total Net Shield](#)
- [SpyWare Killer](#)
- [Total System Sweeper](#)
- [Anonymizer Dialup](#)
- [Other Software](#)

Begin Surfing Privately

To browse anonymously, simply type in a URL and click GO!

or

Search anonymously:

and search for

Private Surfing Settings:

Select Your Privacy Level: Normal Maximum Custom

More Options: [Set Custom](#) | [Help](#) | [About the Settings](#)

PLEASE NOTE: When you click "GO >>" you may see an alert from your browser that you will be "redirected to a page that is not secure ." **PLEASE DISREGARD THIS WARNING** and click 'OK'. You are still COMPLETELY protected by Anonymizer.

www.bugmenot.com



bugmenot.com
Tell everyone you know.

Bypass Compulsory Web Registration

URL of site:
e.g. `http://www.nytimes.com`

SHOW LOGINS

BugMeNot.com was created as a mechanism to quickly bypass the login of web sites that require compulsory registration and/or the collection of personal/demographic information (such as the New York Times).